

THINKINGMUSIC THEORY 101

MAJOR SCALES AND SHARPS

R= root note
W=whole step
H= half step

C major scale: Both treble and bass clef.

R W W H W W W H R W W H W W W H

*Following the same major scale as above, build the G major scale below.
Adding both treble and bass clefs.*

G major

Build the following scales requiring the use of sharps. Remember to use the major scale formula.

D major

A major

E major

B major

F# major

C# major

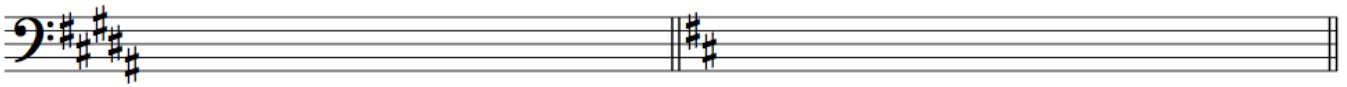
All show sharps in order, show both treble and bass clef.



Write the keys for each of the following key signatures. Careful with the bass clef.









Write down the number of sharps in each key.

A Major _____

E Major _____

B Major _____

G Major _____

D Major _____